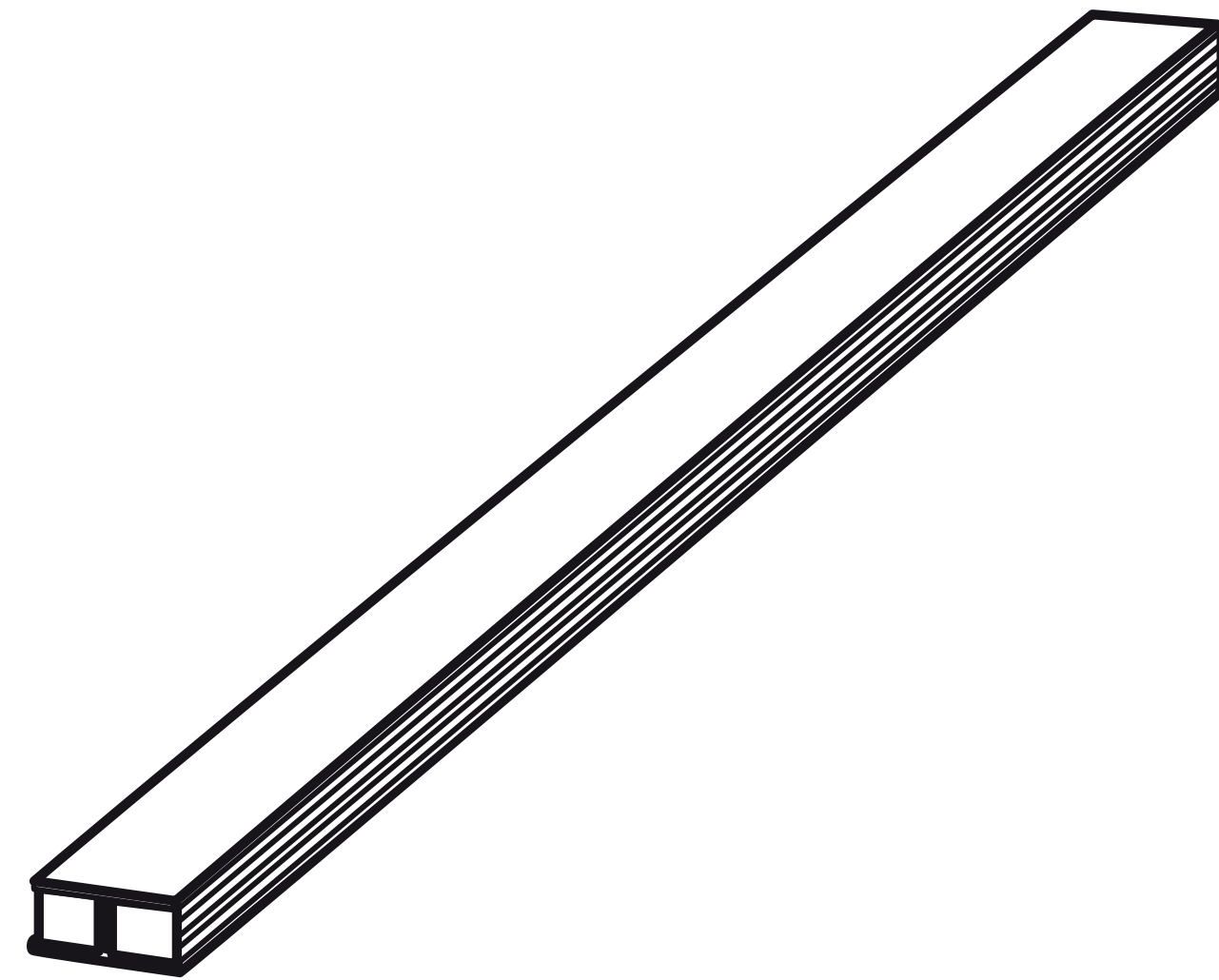


FLEXI-HEX[®]

→ **LITE Sleeve data sheet**



Overview

A patented honeycomb sleeve made from recycled paper that helps protect products in transit. Renowned for its strength, the innovative hexagonal cell structure not only provides an incredible layer of protection around fragile products; it also creates a flexible sleeve that has many applications.

Details

- Designed for the safe shipping of large fragile products
- Made from over 85% recycled paper pulp
- Plastic-free, kerbside recyclable, home compostable and biodegradable
- Quick and easy to assemble
- Lightweight and compact for cost-effective shipping and storage
- Strong, flexible and adaptable; expands up to 600mm wide
- Sleeves are open-ended; can be cut to size and joined at the seam using paper tape
- Can be customised with company branding
- **Boxes sold separately**
- An aesthetic e-commerce solution which adds brand value and improves the customer unboxing experience

Product Information

NAME

Flexi-Hex® LITE Sleeve

SKU

SLE-LIT

Specification

COMPLETE UNIT

WEIGHT

QTY PER BOX

SLEEVE UNIT

1100 L x 35 W x 31mm H
(15mm cell)

765g SU

EXPANDED SLEEVE

Min 35mm - Max 600mm

BOX SIZE

1120 x 200 x 145mm

15.8kg

20 sleeves
per box

Pallet info

DIMENSIONS

1130 x 1130 x 980mm

WEIGHT

494Kg GW

QTY

600

Performance

CRUSH TEST (SLEEVE)

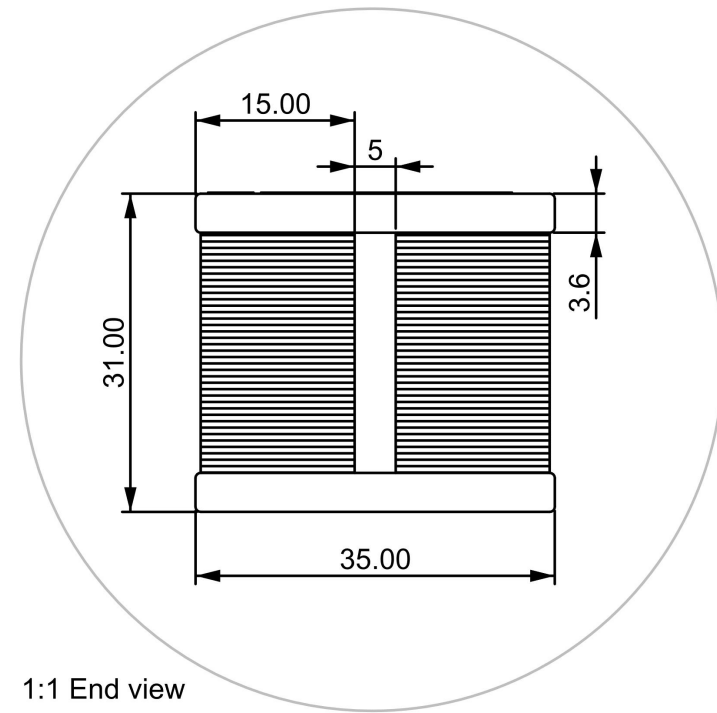
Test follows procedure outlined DIN EN 23035, 09/1994
At 23°C, 50% RH collapsing of the cells was on average 229kPa.
At 40°C, 90% RH collapsing of the cells was on average 147kPa.

Material



Sleeve: Recycled cardboard, recyclable and biodegradable 85% recycled content

LITE SLEEVE DATA SHEET

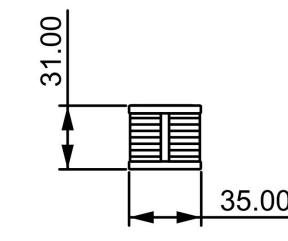


1:1 End view

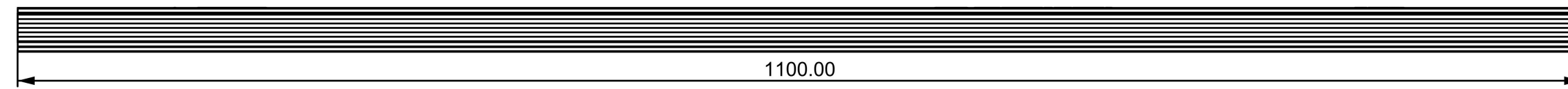


Plan view

Printed logo

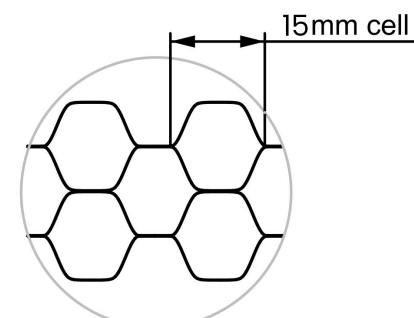


End view (Section)

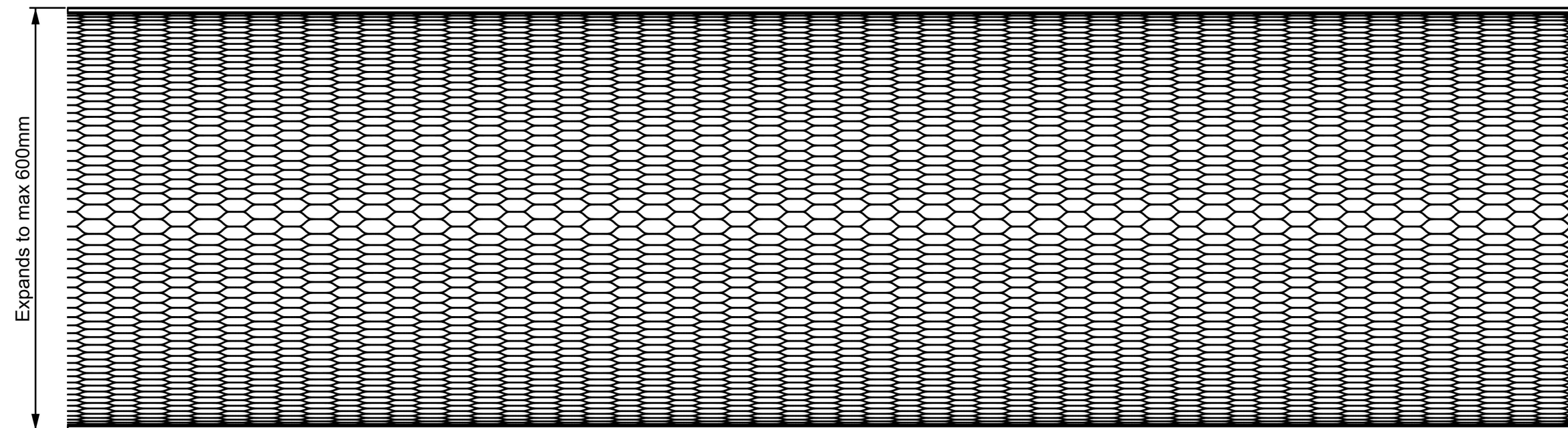


Side view

1100.00

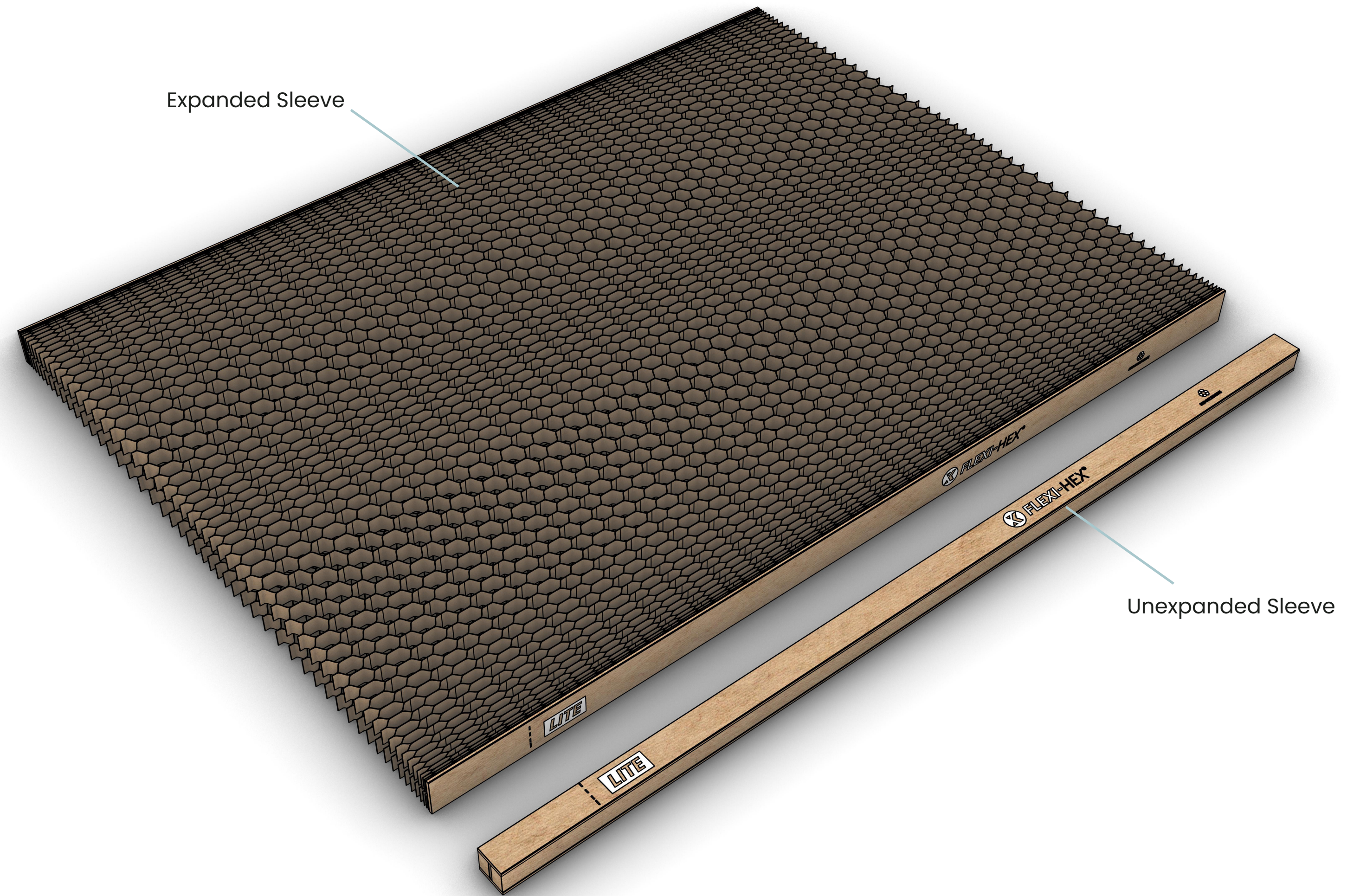


Cell detail



Expanded sleeve

LITE SLEEVE DATA SHEET



LITE SLEEVE DATA SHEET

